

SORTER INSTALLATION INSTRUCTIONS

THANK YOU FOR PURCHASING AN INSPECTION MASTERS SORTER! THE FOLLOWING DESCRIBES HOW TO INSTALL YOUR NEW SORTER. ONCE THE SORTER HAS BEEN INSTALLED AND THERE IS ELECTRICAL POWER AND COMPRESSED AIR CONNECTED, CALL INSPECTION MASTERS AT [575-647-8203](tel:575-647-8203). WE WILL SCHEDULE A TIME TO COME TO YOUR PLANT, TEST YOUR SORTER, TRAIN YOUR OPERATORS, AND PROVIDE YOU WITH AN OPERATOR'S MANUAL.

1. Remove the plywood panels on the shipping crate, then remove the 2x4 and 2x6 lumber.

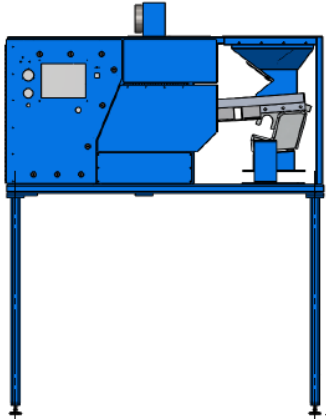


2. Support the Sorter on a forklift, then unbolt the 4 metal shipping feet from under the 4 corners of the frame.

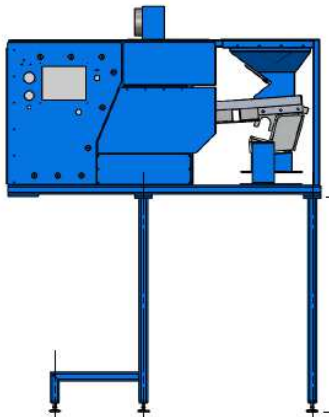


3. If Inspection Master legs were ordered, cut them to the desired length and weld the square mounting pads on the end of each leg. Make sure the pads are centered so that the bolt holes will line up with the mounting pads on the Sorter frame. Install the legs under the Sorter using 3/8-16 x 1" bolts and 3/8" flat washers.

- a. End legs are installed on each end of the frame:



- b. Mid legs are installed with the outrigger legs in the middle location of the frame, and the straight legs on the vibrator end of the frame.



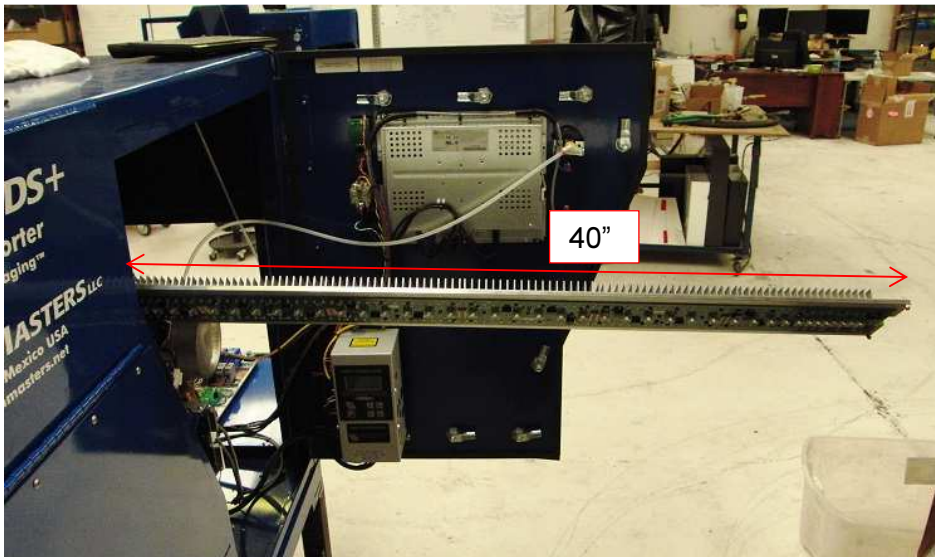
4. Screw the swivel feet into the bottom of each leg. Adjust the swivel feet until the Sorter is completely level end-to-end and side-to-side. All feet must be firmly on the ground to prevent excess noise and vibration. Tighten the locknuts up against the bottom of each leg.



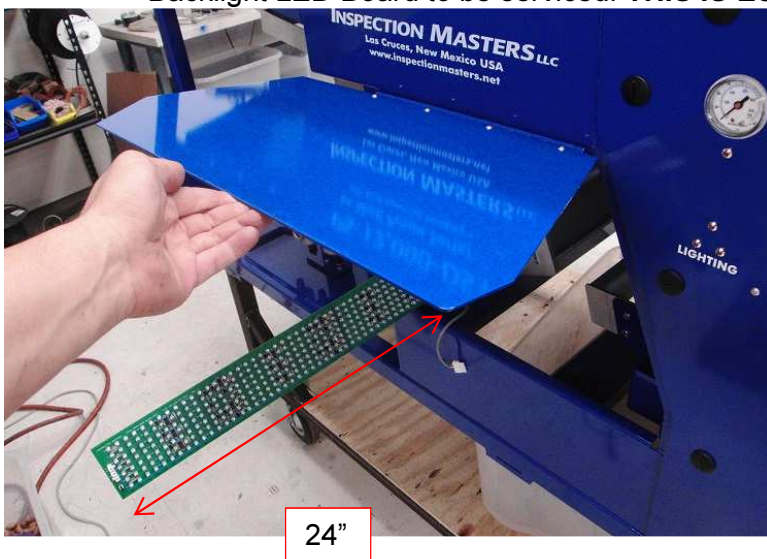
5. If the Owner will install their own legs or fabricate a custom installation, please make sure the Sorter is stable, secure, and level. Heavy construction is desirable to prevent excessive noise and vibration. If two or more Sorters will installed in the same location, each Sorter **MUST** be on a separate frame to prevent excess noise and vibration. **DO NOT** mount Sorters on the same frame.

6. THE SORTER MUST BE POSITIONED SO THAT ALL OF THE DOORS AND LIGHT BARRIERS CAN BE FULLY OPENED FOR MAINTENANCE AND SERVICE. DO NOT LOCATE OTHER PLANT MACHINERY AROUND THE SORTER THAT RESTRICTS ACCESS.

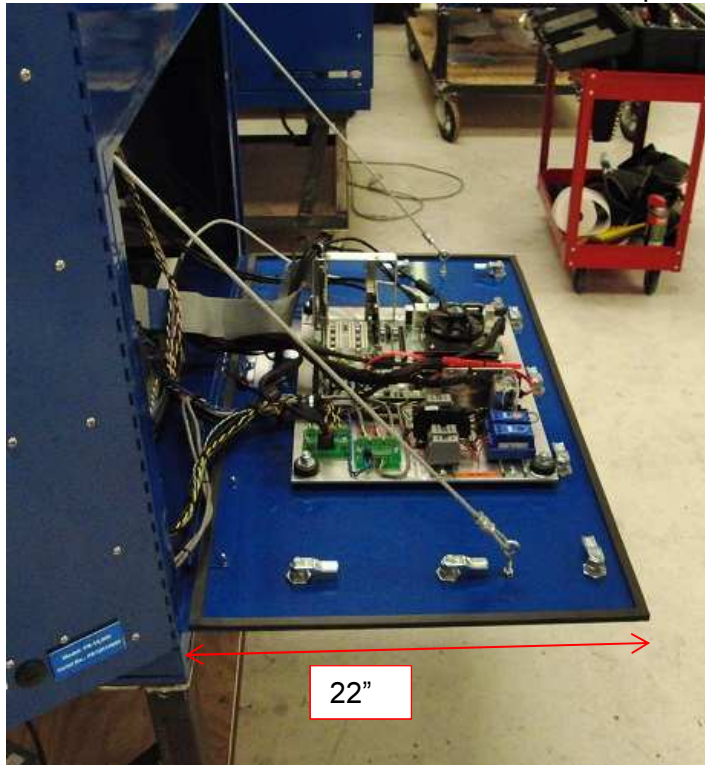
a. The Operator Door requires 40” of clearance to allow the Front LED Boards to be serviced. **THIS IS ESSENTIAL!**



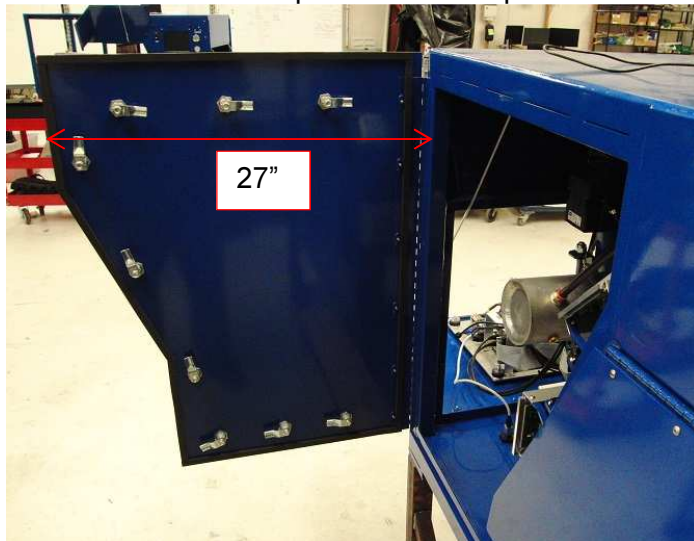
b. The Light Barrier on the Operator Door side requires 24” of clearance to allow the Backlight LED Board to be serviced. **THIS IS ESSENTIAL!**



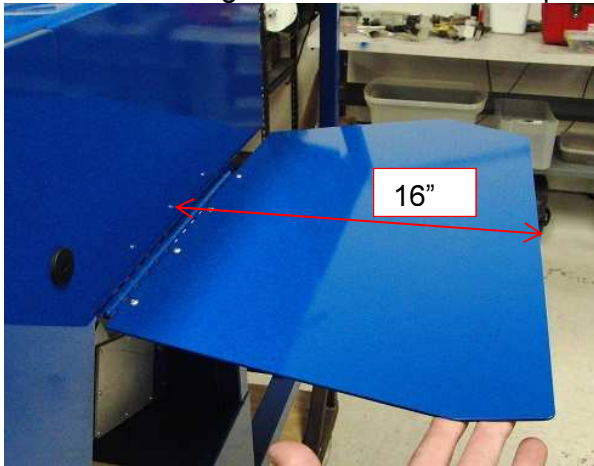
c. The door on the end of the cabinet requires 22" of clearance. **THIS IS ESSENTIAL!**



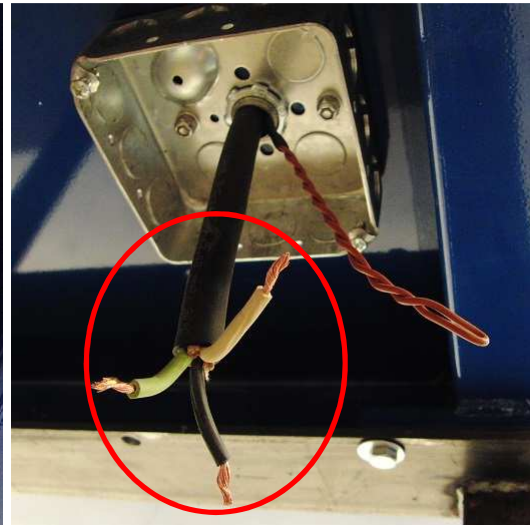
d. The Non-Operator Door requires 27" of clearance.



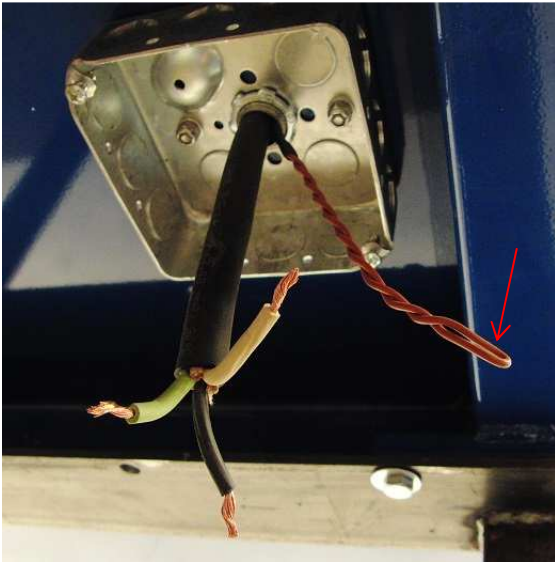
- e. The Light Barrier on the Non-Operator side requires 16" of clearance.



7. Remove the cover from the Electrical Box underneath the cabinet. Connect 115 Volt AC, 15A power to the 3-wire electrical cord. The power must come from a dedicated circuit breaker, with no other equipment sharing the circuit, to prevent electrical interference. Do not apply power or turn on the sorter at this time.



8. If the Owner desires to remotely control the vibrator feed, cut the brown wire loop and connect a switch or a relay contact across the two wires. DO NOT apply ANY voltage to the brown wires or the vibrator controller will be destroyed! The FEED switch on the Operator Door should be left ON to allow the remote switch to turn the feed on and off.

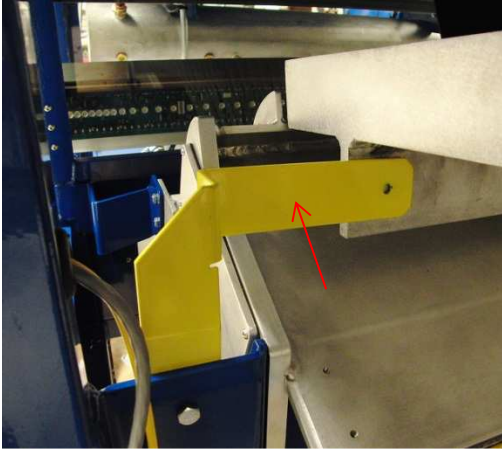


9. Reinstall the cover on the Electrical Box.

10. Remove the red plastic cap from the valve on the Filter Regulator Assembly. Connect a CLEAN AND DRY compressed air supply, preferably with permanent piping. The air supply must be at least 140 psi and 10 cfm. Do not open the air valve at this time.



11. Remove the two yellow shipping brackets underneath the vibrating feed pan, one on each side. The brackets MUST be removed before operation.



12. Call Inspection Masters at 575-647-8203 to schedule an appointment.